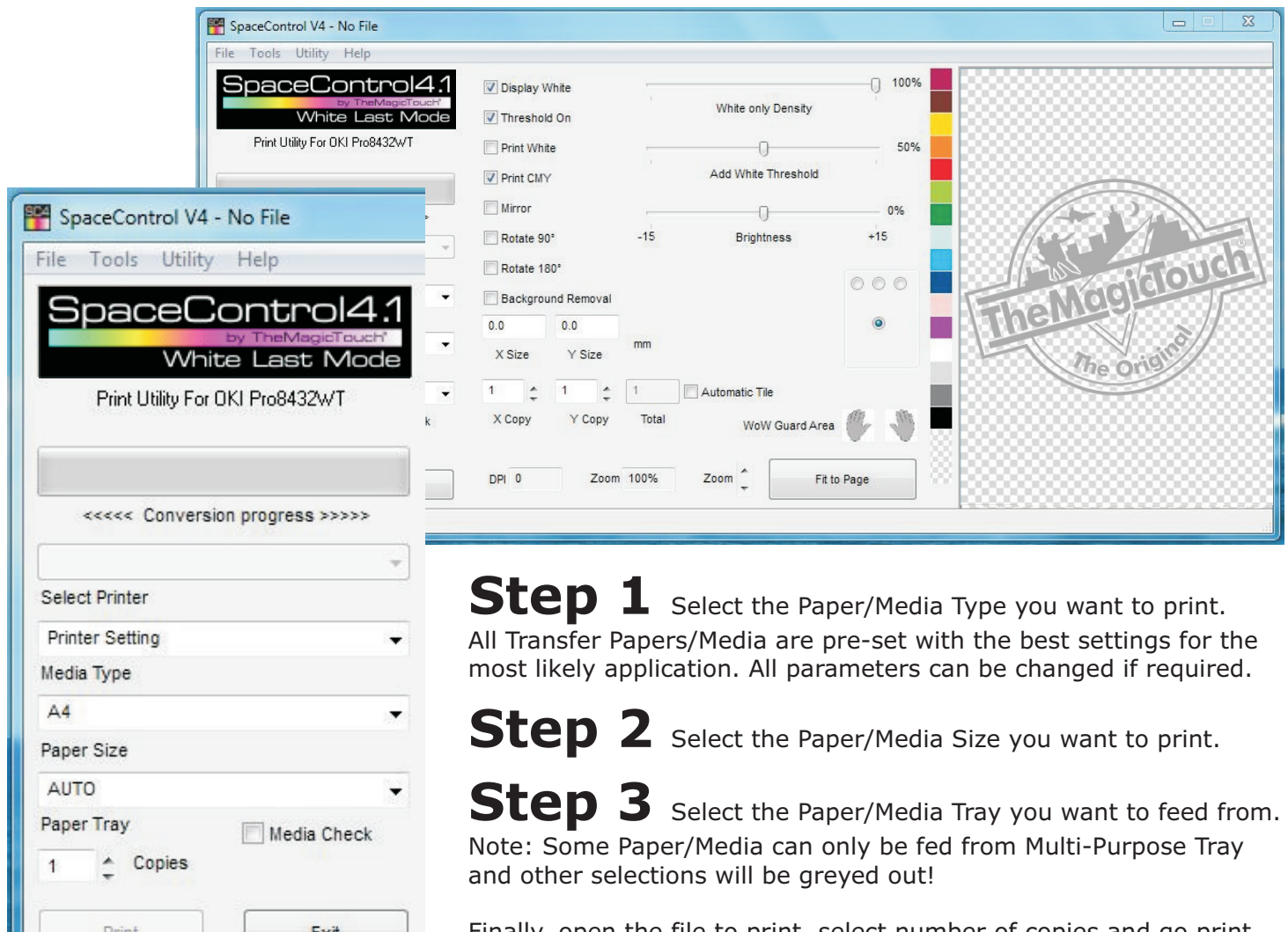


# How to work with SpaceControl Print Utility

Note: Your Artwork should be prepared with transparent background, i.e. all areas that should not print with any colour, including white, have to be removed and transparent. The best file formats to use with SpaceControl would be .png or .tif which can be saved/exported from most Graphic software applications.

## ... as simple as 1, 2, 3.



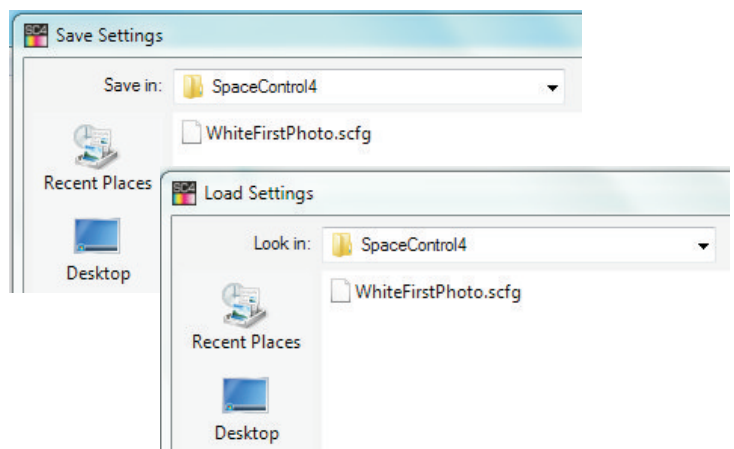
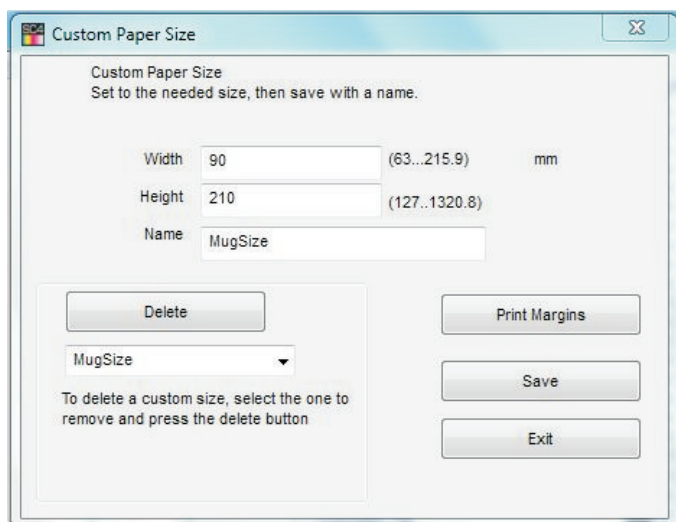
**Step 1** Select the Paper/Media Type you want to print. All Transfer Papers/Media are pre-set with the best settings for the most likely application. All parameters can be changed if required.

**Step 2** Select the Paper/Media Size you want to print.

**Step 3** Select the Paper/Media Tray you want to feed from. Note: Some Paper/Media can only be fed from Multi-Purpose Tray and other selections will be greyed out!

Finally, open the file to print, select number of copies and go print.

White levels can be adjust for both 'White Only' and 'Add White Threshold', Mirror print on/off, Brightness, Colour Profiles and more. All those Settings can be saved with a name and loaded when required.



Very important feature of SpaceControl is the Custom Paper Size facility. You can build you own Paper Size by the mm, assign a Name to it and save it. It will be included in your Paper Size selection and can be loaded by one click.